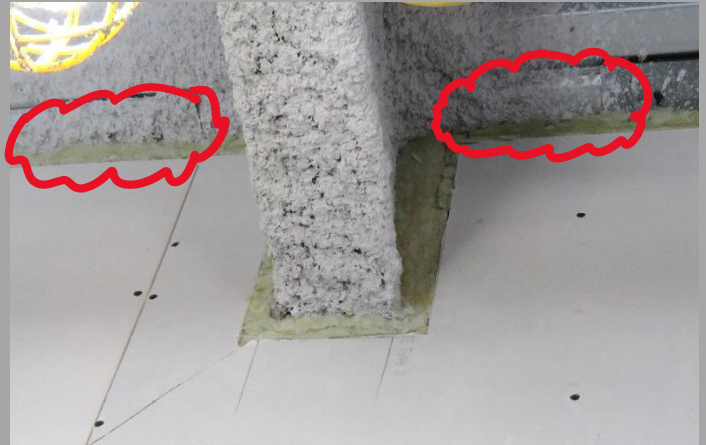




Projects that have spray fireproofing that only protect the beams or joists, the overspray onto the metal deck needs to be cleaned off prior to the installation of the Head of Wall spray fire stopping.



DO NOT APPLY SPRAY FIRE STOPPING TO OVERSPRAY!



The UL assembly is tested with bare metal. By applying the spray fire stopping onto the overspray, the adhesion is likely compromised by the spray fireproofing.

(Typical overlap requirements of spray fire stopping per tested assembly:
1/2" onto drywall & metal...2" onto Spray Fireproofing)

